

EPI•WIN

WHO Information Network for Epidemics

Novel coronavirus (2019-nCoV)

2019 - 2020

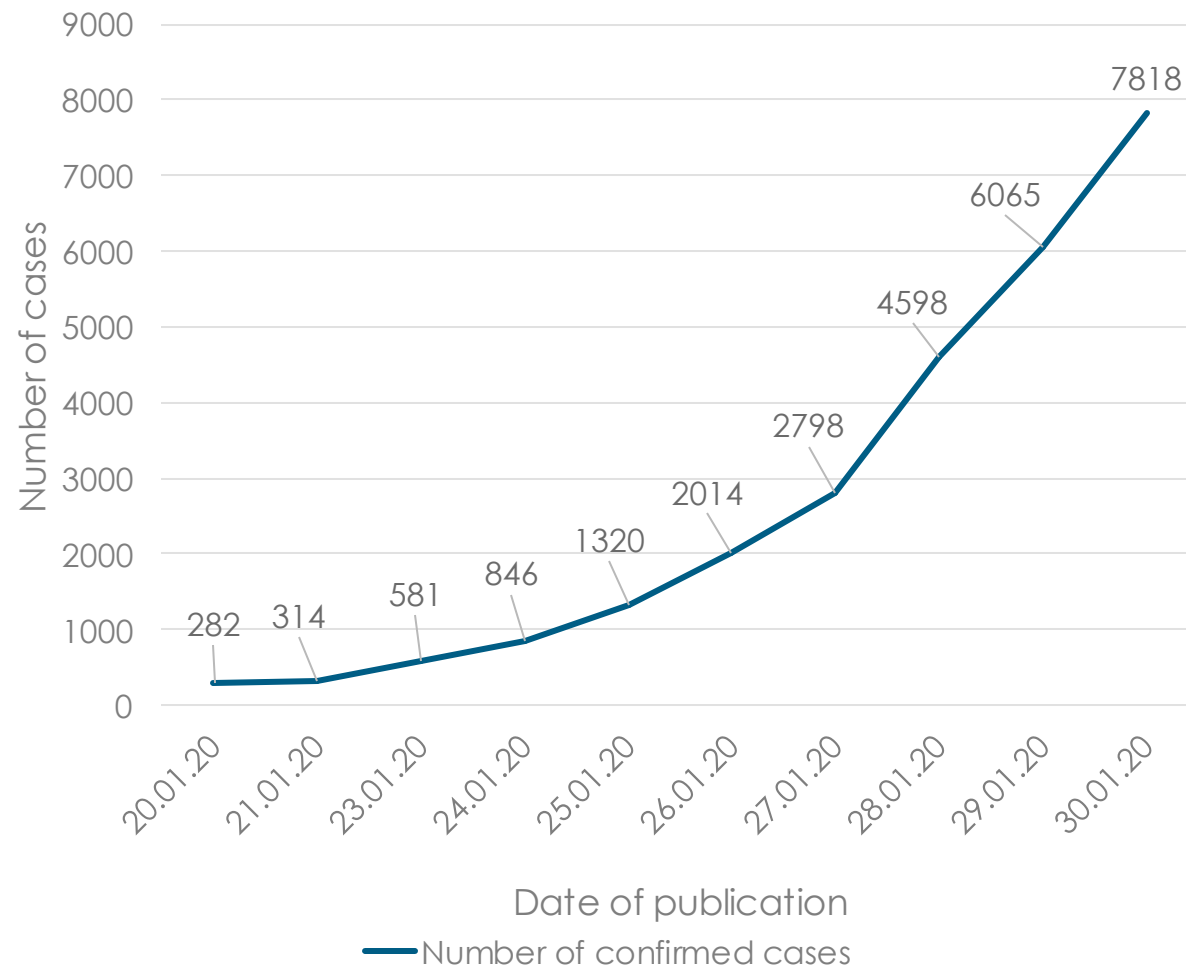
Update #4 30.01.20



**World Health
Organization**

New information

Trends in number of total reported confirmed cases of 2019-nCoV globally



Source: WHO situation reports: <https://www.who.int/emergencies/diseases/novel-coronavirus-2019/situation-reports> that include information reported to WHO Geneva by 10 AM CET on the date of publication.

The numbers – data as of 30.01.2020 – various sources

**Total
number
of cases
8,235**

**Total
number
of deaths
171**

**Total
recovered
143**

19 Countries affected:

- China
- Japan
- Republic of Korea
- Viet Nam
- Singapore
- Australia
- Malaysia
- Cambodia
- Thailand
- Nepal
- Sri Lanka
- United States of America
- Canada
- France
- Germany
- United Arab Emirates
- India
- Philippines
- Finland

**The most vulnerable
people are those
with underlying
conditions and
advanced age.**

Source:

<https://gisanddata.maps.arcgis.com/apps/opsdashboard/index.html#/bda7594740fd40299423467b48e9ecf6>

Not all confirmed cases are verified – data sources for the website are WHO, CDC, NHC and Dingxiangyuan.

Please also see WHO situation reports: <https://www.who.int/emergencies/diseases/novel-coronavirus-2019/situation-reports> that include information reported to WHO Geneva by 10 AM CET on the date of publication.

WHO's risk assessment

***Current WHO risk assessment:
very high in China, high at the
regional level and high at the
global level***

WHO Risk Assessments are based on:

1. Likelihood of spread
2. Potential impact to human health
3. Likelihood of insufficient control capacities



The Director-General of WHO, Dr Tedros Adhanom Ghebreyesus, met President Xi Jinping of the People's Republic of China in Beijing on the 28th January, to discuss the next steps on how to manage the coronavirus outbreak.

WHO declares a Public Health Emergency of International Concern (PHEIC) – 30.01.2020

What happens when a PHEIC is declared?
WHO DG issues temporary recommendations for countries to implement including:

1. Measures to stop international spread of the disease including increasing transparency and collaboration, and supporting countries with weaker health systems
2. Obligations for countries to provide sufficient public health rationale and justification to WHO about any additional measures (beyond what WHO recommends) and/or travel and trade restrictions
3. Advice to accelerate research and development of vaccines, therapeutics and diagnostics

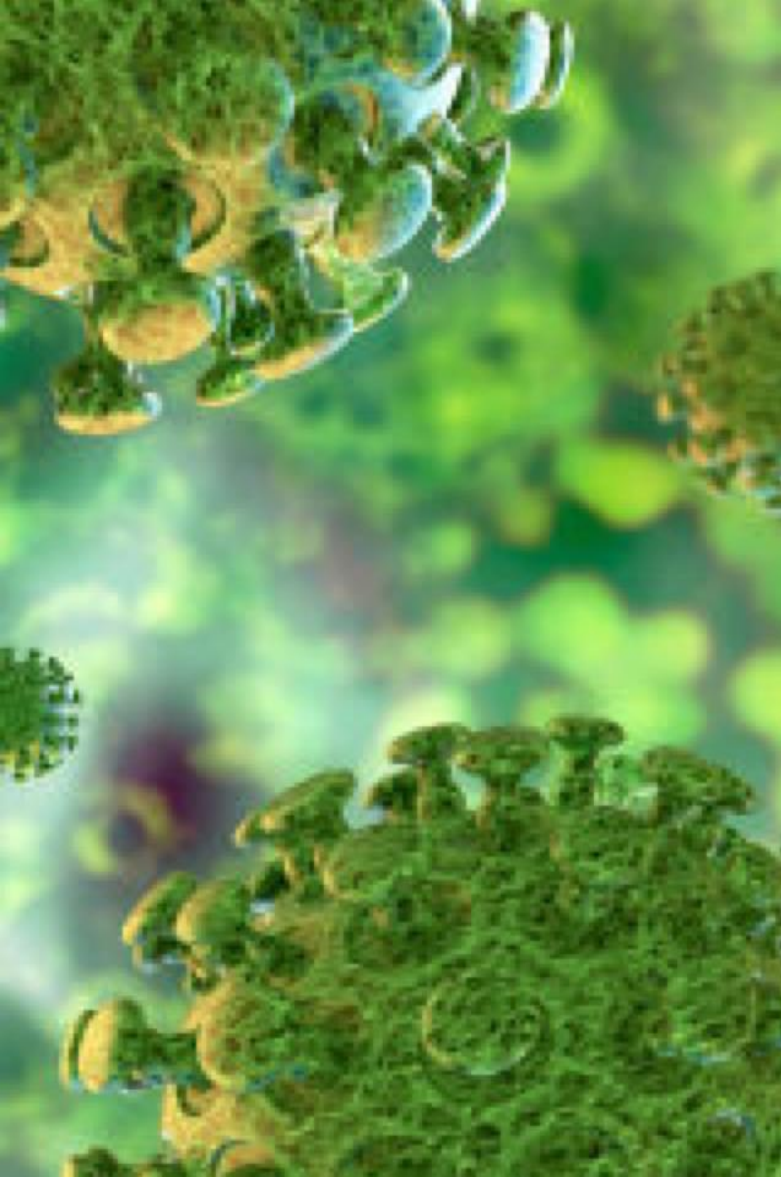
What are the implications?

- Some countries may use the declaration of a PHEIC as a trigger for certain policies and procedures to be implemented
- Some donors may use the declaration of a PHEIC as a trigger for releasing funding for response

[https://www.who.int/news-room/detail/30-01-2020-statement-on-the-second-meeting-of-the-international-health-regulations-\(2005\)-emergency-committee-regarding-the-outbreak-of-novel-coronavirus-\(2019-ncov\)](https://www.who.int/news-room/detail/30-01-2020-statement-on-the-second-meeting-of-the-international-health-regulations-(2005)-emergency-committee-regarding-the-outbreak-of-novel-coronavirus-(2019-ncov))

Information about the virus and the outbreak

Introduction



What is a coronavirus?

Coronaviruses are a group of viruses belonging to the family of *Coronaviridae*, that infect both animals and humans. Human coronaviruses can cause mild disease similar to a common cold, while others cause more severe disease (such as MERS - Middle East Respiratory Syndrome and SARS – Severe Acute Respiratory Syndrome). Some coronaviruses that are found in animals can infect humans – these are known as zoonotic diseases.

How are coronaviruses spread?

Human coronaviruses are usually spread through droplets (coughing) and close personal unprotected contact with an infected person (touching, shaking hands).

What are the symptoms?

Signs and symptoms are typically respiratory symptoms and include fever, cough, shortness of breath, and other cold-like symptoms.

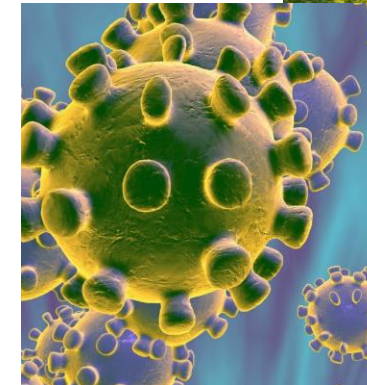
Introduction continued

What is known about the disease identified in Wuhan China?

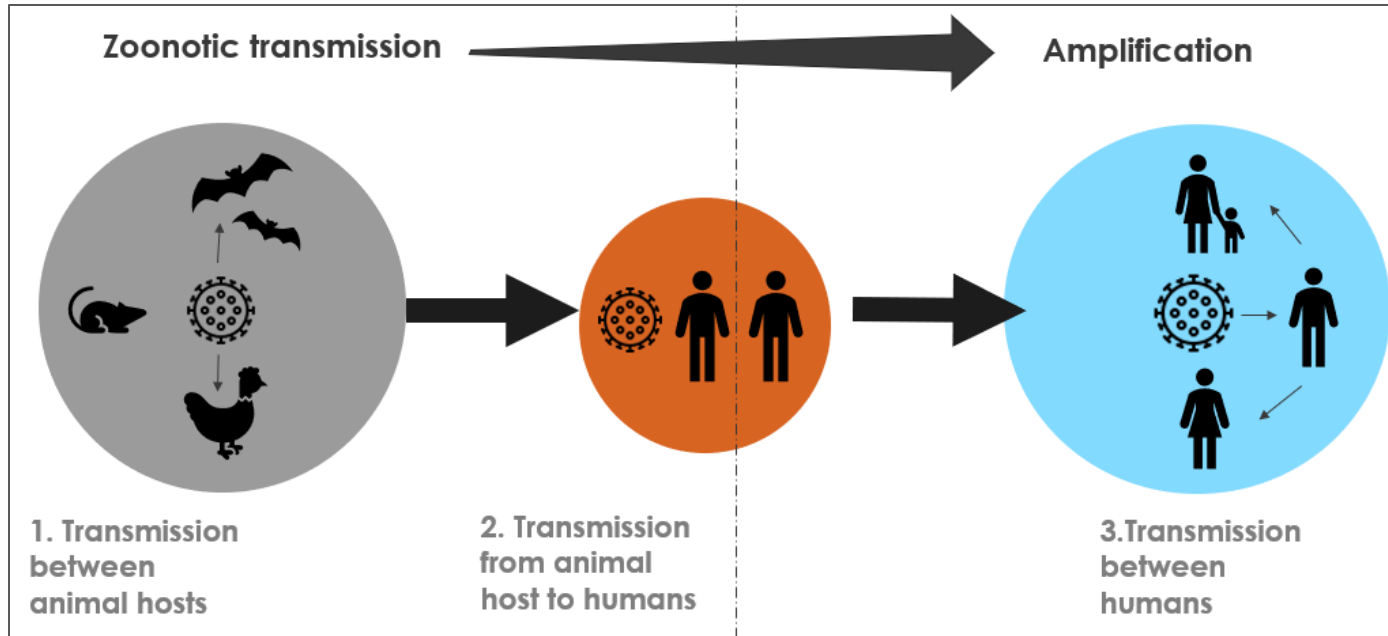
- It is caused by a novel coronavirus (called 2019-nCoV)
- Infection with this virus causes respiratory disease ranging from mild to severe disease.
- Some infected patients have died (elderly people and people with serious underlying medical conditions are more at risk for severe disease and death)

What is NOT known about the disease?

- Where it came from?
- How easily it spreads between people?
- Who is vulnerable to infection?



Human to human transmission

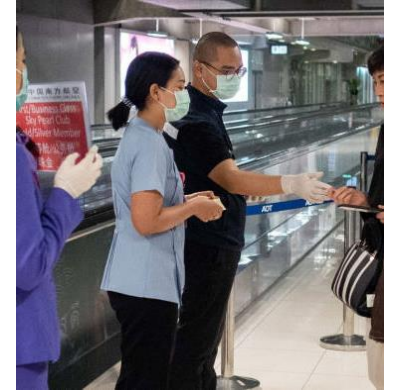


It is evident that some human to human transmission is occurring between close contacts including family members and health care workers. The full extent of this transmission is not yet known.

What is being done to control the outbreak?

What are affected countries doing?

- Remaining vigilant for new cases and providing care for existing cases
- Implementing screening of travelers
- Sharing information with WHO and other countries



What is WHO doing?

- Increasing understanding of this disease
- Providing advice
- Keeping countries informed
- Coordinating with partners
- Helping countries prepare



Priorities for collective action to stop transmission and mitigate the impact of the event

1

Limit human to human transmission

2

Identify, isolate and care for patients early

3

Address critical unknowns (source, clinical severity, extent of transmission and infection, treatment options, diagnostics therapeutics and vaccines)

4

Communicate critical risk and event information to all communities and countering misinformation

5

Minimize social and economic impact through multisectoral partnerships

Guidance and advice

Public health advice

Stay healthy and protect yourself and others from infection



Reduce risk of **coronavirus** infection

1



Frequently clean hands by using alcohol-based hand rub or soap and water

2



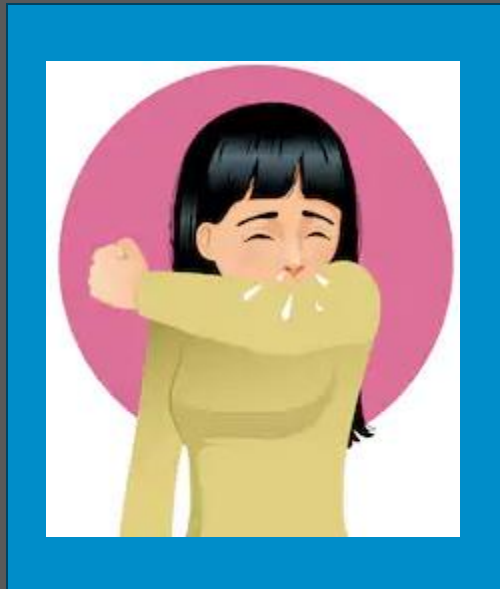
When coughing and sneezing cover mouth and nose with flexed elbow or tissue – throw tissue away immediately and wash hands

3



Avoid close contact with anyone that has fever and cough

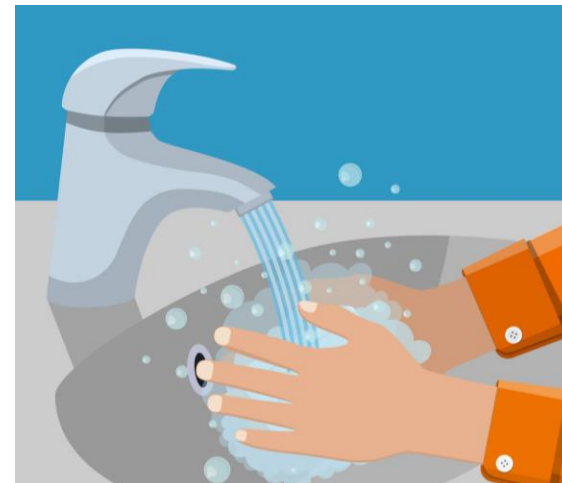
Advice for people living in an area of China that has been affected or traveled from an affected area



- Stay aware of the latest information and take care of your health by doing the following:
 - Maintain social distancing – maintain 1 – 2 meters distance between yourself and other people, particularly those that are coughing, sneezing and have a fever
 - Why? When someone sneezes or coughs, small droplets carrying the virus can project resulting in one becoming contaminated with the person's secretions if a certain distance isn't maintained
 - Avoid touching eyes, nose and mouth
 - Why? Hands touch many surfaces which can be contaminated with the virus. If you touch your eyes, nose or mouth with your contaminated hands, you can transfer the virus from the surface to yourself.
 - Wash your hands frequently with alcohol-based hand rub or soap and water
 - Why? Washing your hands with alcohol-based hand rub or soap and water kills the virus if it is on your hands.
 - If you have fever, cough and difficulty breathing seek medical care early and share previous travel history with your health care provider
 - Why? Whenever you have fever, cough and difficulty breathing it's important to seek medical attention promptly as this may be due to nCoV or other serious condition.

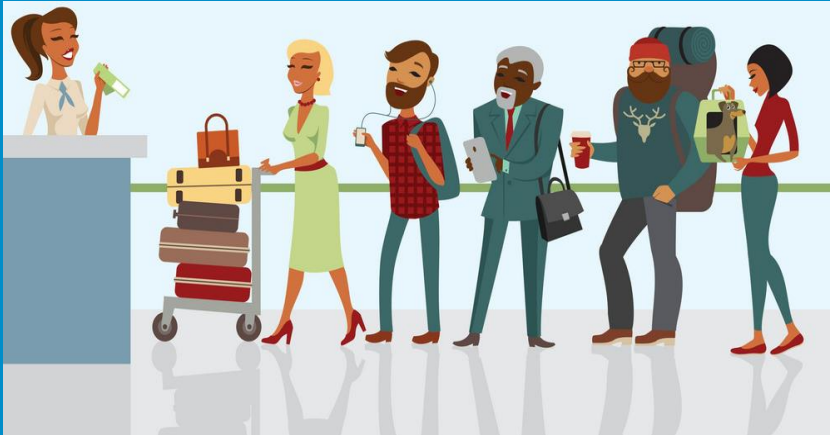
Advice for people who have not lived or visited areas that have been affected in China and have not come into contact with anyone who has been affected

- Stay aware of the latest information and simply take care of your health by doing the following:
 - Eating a balanced diet, getting enough sleep and take the usual precautions that you would to avoid the flu
 - Avoid touching eyes, nose and mouth
 - Why? Hands touch many surfaces which can be contaminated with the virus. If you touch your eyes, nose or mouth with your contaminated hands, you can transfer the virus from the surface to yourself.
 - Wash your hands regularly with alcohol-based hand rub or soap and water
 - Why? Washing your hands with alcohol-based hand rub or soap and water kills the virus if it is on your hands.



Advice for travel by air, boat and train

Stay healthy while travelling



Before you depart:

Avoid travel if you have a fever and cough

If you have a fever, cough and difficulty breathing seek medical attention and share previous travel history with your health care provider



During travel:

- **Avoid close contact with anyone that has a fever and cough**
- **Frequently clean hands by using alcohol-based hand rub or soap and water**
- **Avoid touching eyes, nose or mouth**
- **When coughing and sneezing cover mouth and nose with flexed elbow or tissue – throw tissue away immediately and wash hands**
- **If you choose to wear a facemask, be sure to cover mouth AND nose. Avoid touching the mask once it's on, immediately discard single-use mask after each use and wash hands after removing masks**
- **If you feel sick or you see somebody sick on board an aircraft, inform plane crew**
- **If you have signs and symptoms suggestive of acute respiratory illness such as fever, cough and difficulty breathing during and after travel, seek medical care early and share previous travel history with your health care provider.**
- **Avoid spitting.**
- **Eat only well-cooked food. Travelers may carry their own food during travel and transit**
- **Avoid close contact and travel with animals that are sick.**

More information

WHO sources:

NCoV website <https://www.who.int/health-topics/coronavirus>

Disease Outbreak News <https://www.who.int/csr/don/en/>

WHO Travel Advice <https://www.who.int/ith/en/>

Email: EPI-WIN@who.int